




# Presidents Forum



*19<sup>th</sup> September 2015 , Palm Beach, Florida*

**Presentation by Akira Shiki  
President of JIVA**



# Today's agenda

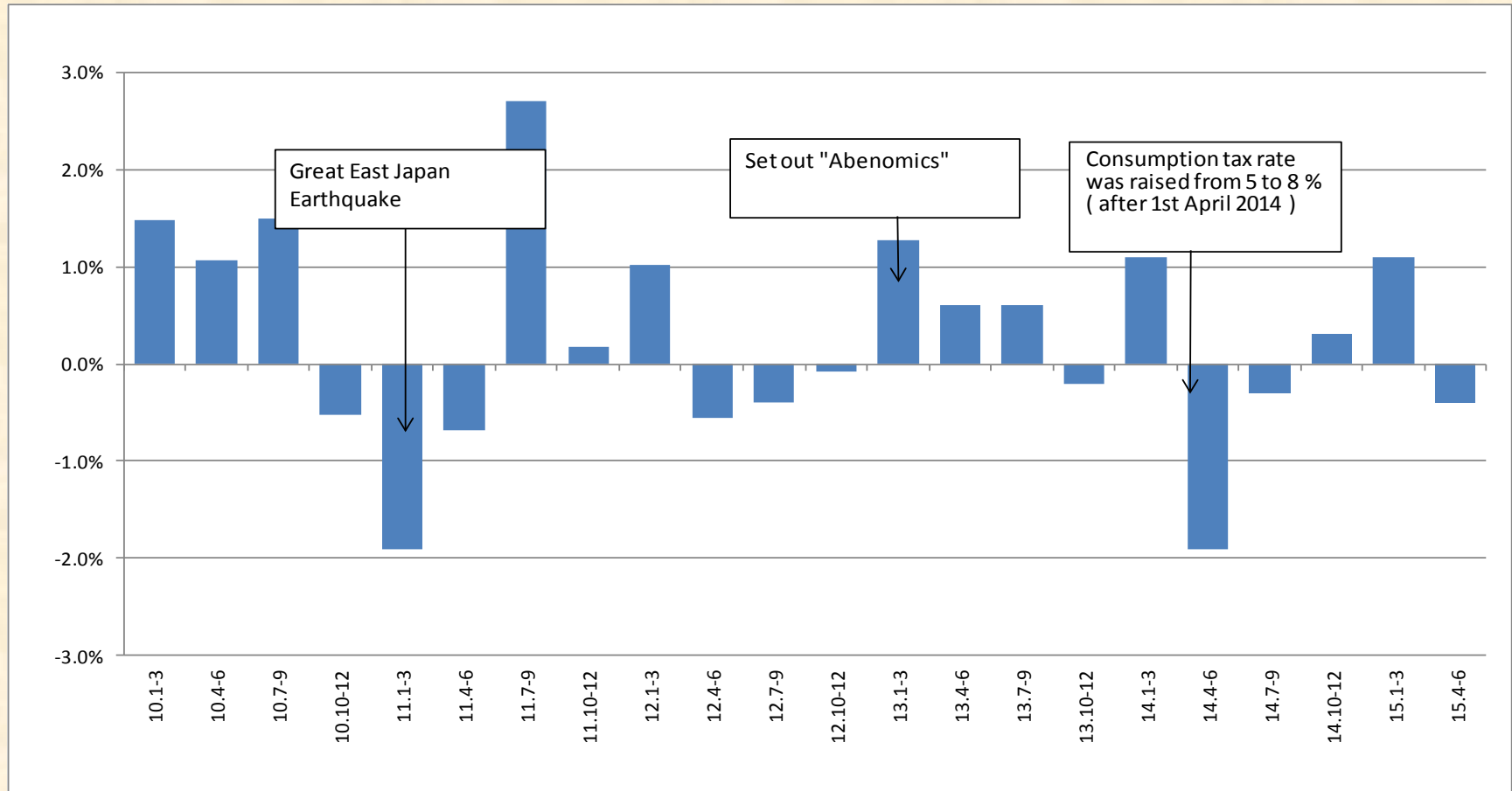
1. Trend of Japanese economy

2. Current and future lift trucks market in Japan

# Trend of Real GDP

(seasonally adjusted)

(Changes from the previous quarter )



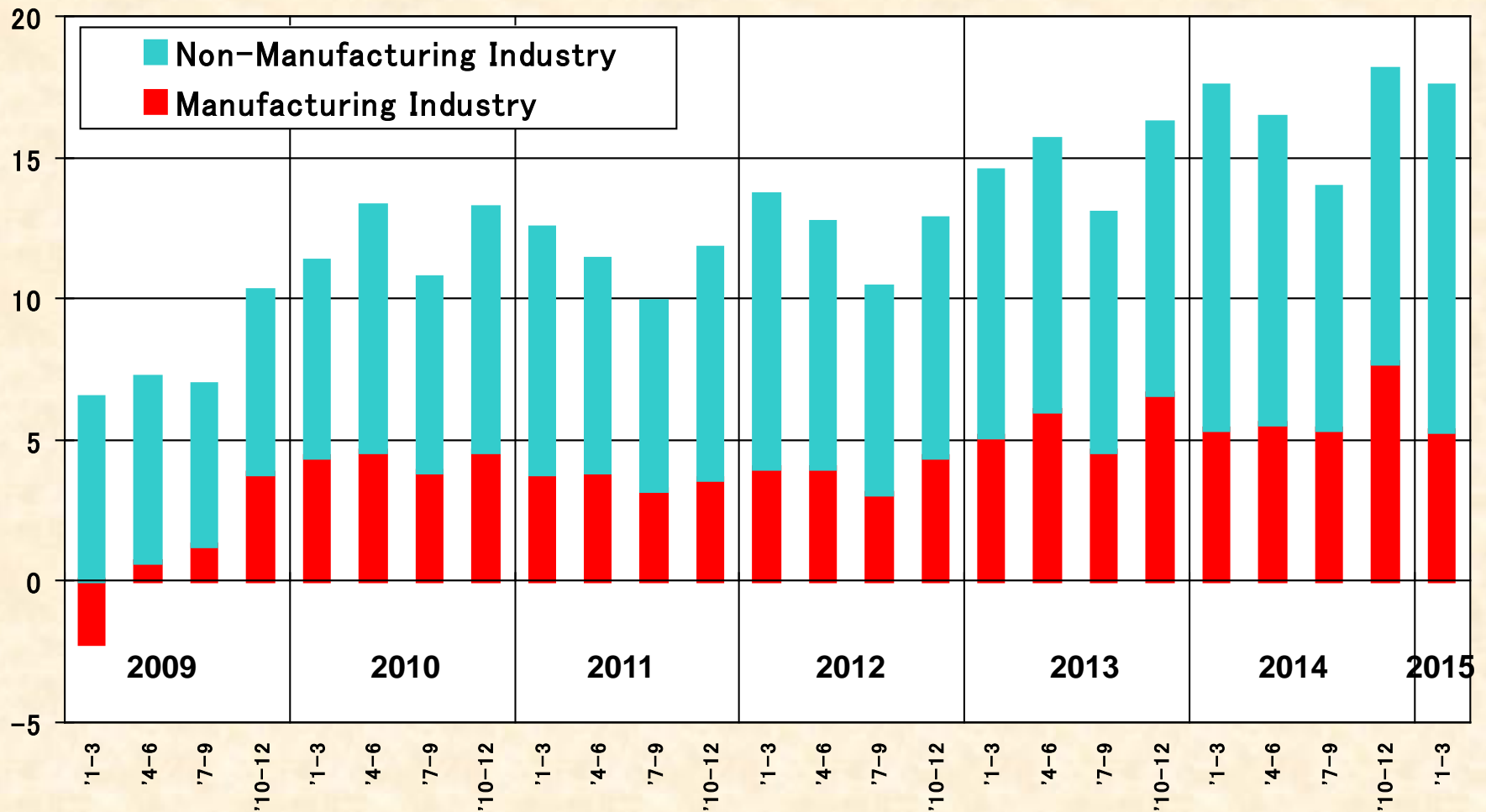
# Breakdowns for Real GDP

|                                | 2014<br>1-3 | 2014<br>4-6 | 2014<br>7-9 | 2014<br>10-12 | 2015<br>1-3 | 2015<br>4-6 |
|--------------------------------|-------------|-------------|-------------|---------------|-------------|-------------|
| GDP                            | 1.1         | -1.9        | -0.3        | 0.3           | 1.1         | -0.4        |
| Private Consumption            | 2.1         | -5.0        | 0.3         | 0.3           | 0.3         | -0.8        |
| Private Residential Investment | 2.0         | -10.9       | -6.3        | -0.6          | 1.7         | 1.9         |
| Private Non-Resi. Investment   | 5.0         | -4.6        | 0.0         | 0.2           | 2.8         | -0.1        |
| Government Consumption         | -0.2        | 0.1         | 0.3         | 0.3           | 0.3         | 0.4         |
| Public Investment              | -0.7        | 0.2         | 1.7         | 0.3           | -1.2        | 2.6         |

# Current Profits in Corporations

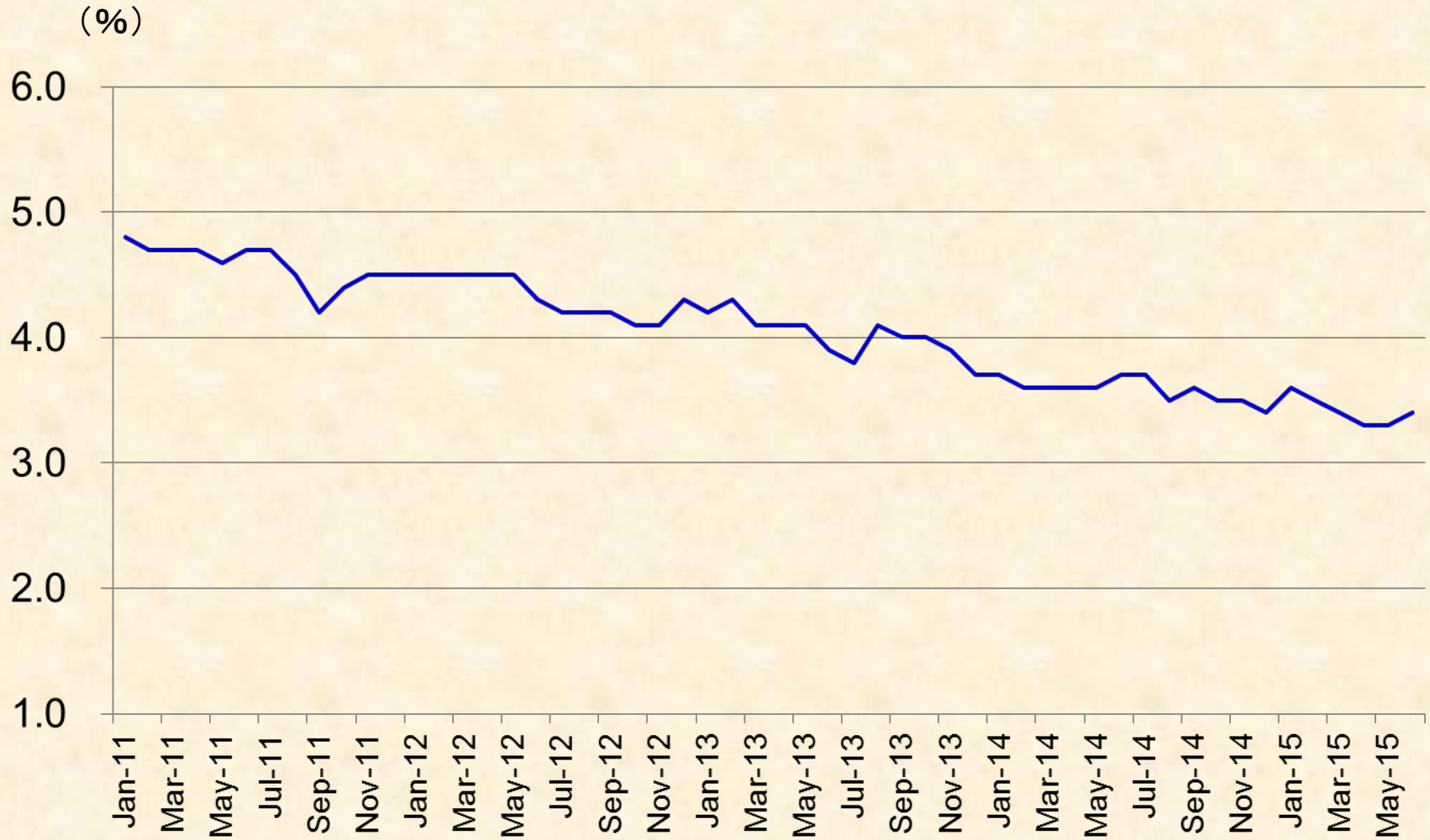
Ministry of Finance, Financial statements statistics


(trillion yen)





# Unemployment Rate



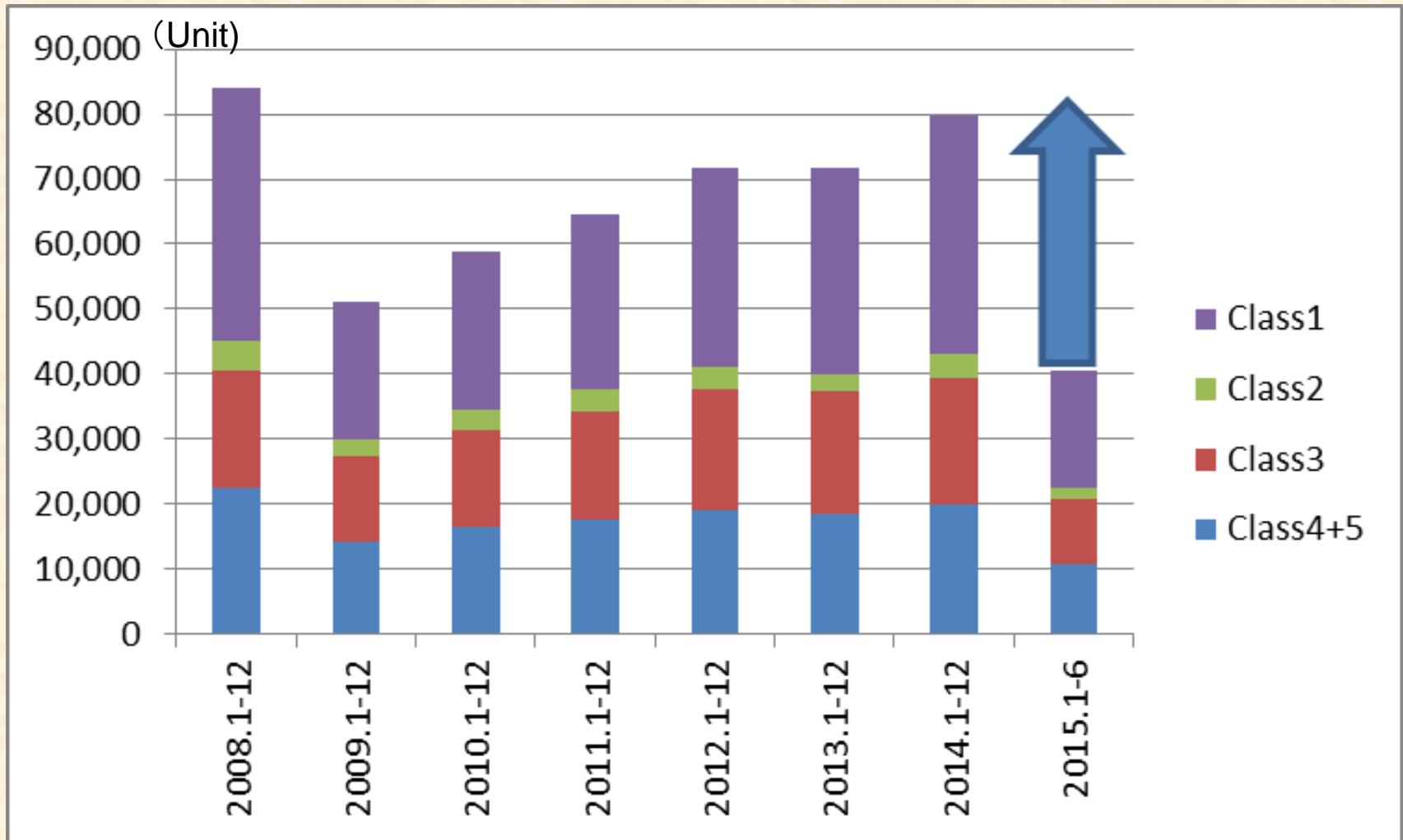


# Today's agenda

1. Trend of Japanese economy

2. Current and future lift trucks market in Japan

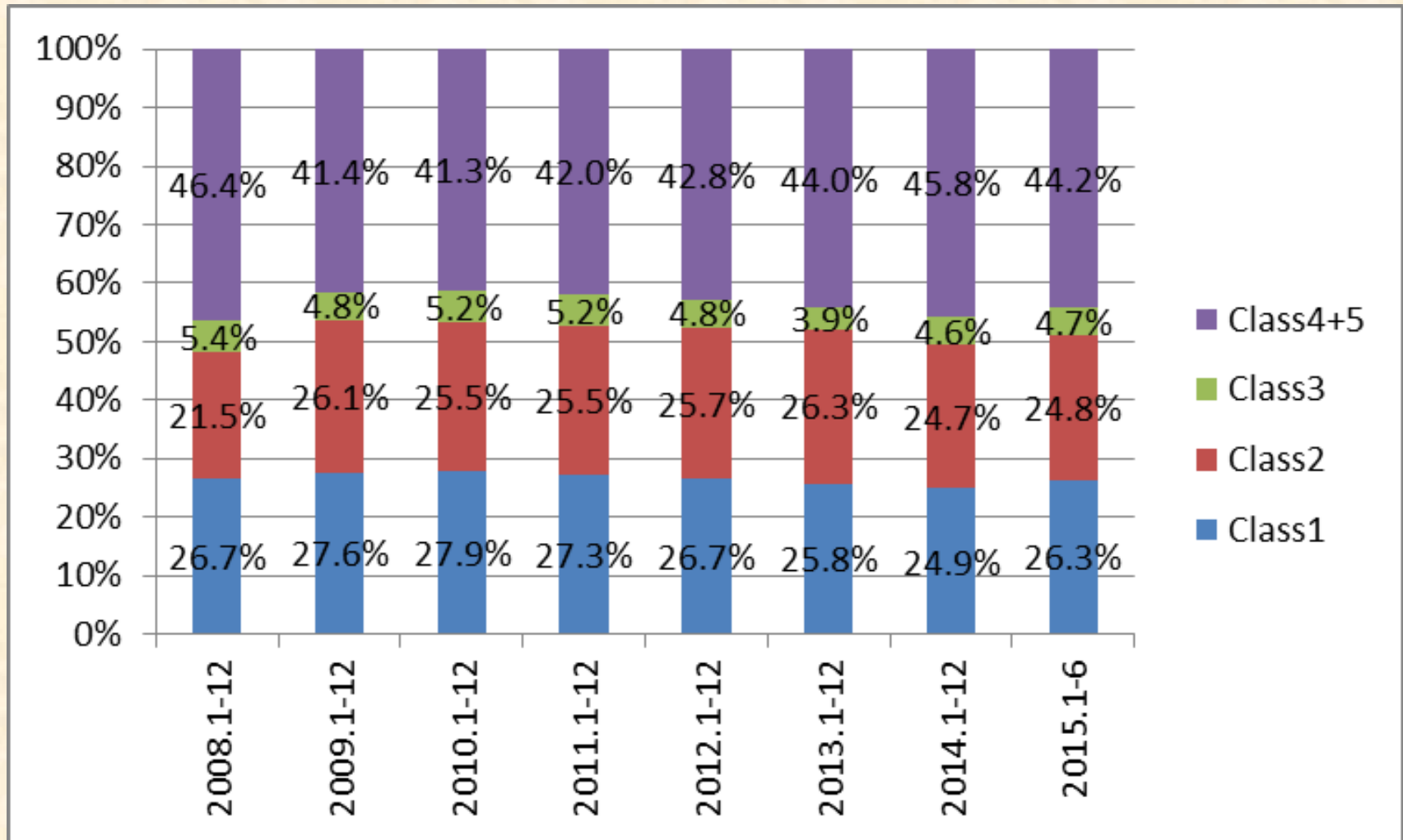
# 2015 Domestic demand in Japan is expected to increase by 3%



(Source from WITS shipment)

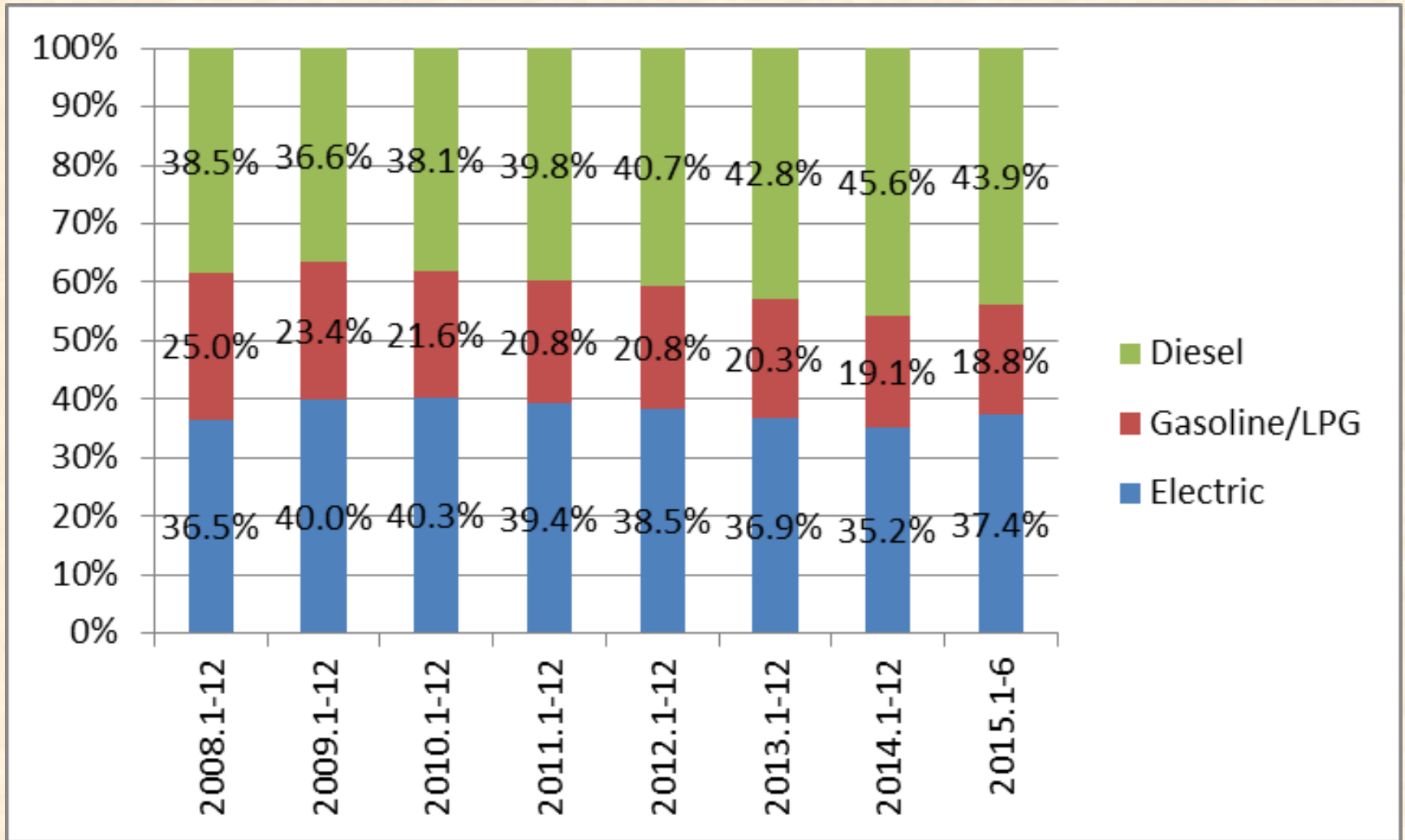


# Trend of Truck Class in Japan



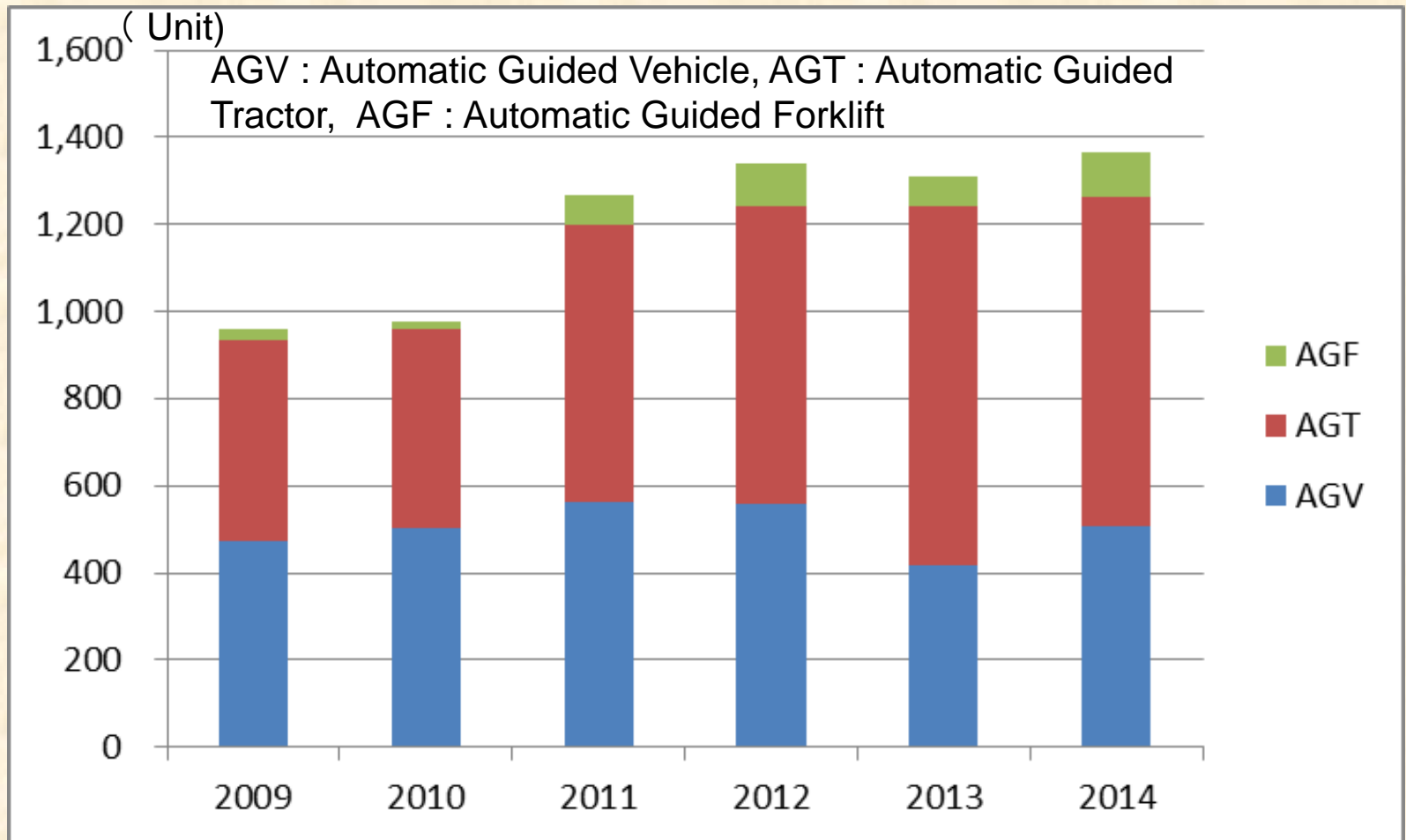
(Source from WITS shipment)

# Trend of Power Type in CB Trucks



(Source from JIVA shipment)

# Trend of AGVS market in Japan



# Plan for 2016

JIVA is proud to host the next Alliance Meeting and the Presidents Forum in 2016

They will be held in conjunction with Logis-Tech-Tokyo 2016, the biggest trade show featuring Material Handling Equipment and Solutions in Asia.



## Show schedule

13(Tue) – 16(Fri)  
September 2016  
at Tokyo Big Sight



Thank you for your attention